

## RSL Retrofit Strip Light



### WARNING/ADVERTENCIA/AVERTISSEMENT

To reduce the risk of electrical shock, fire, or injury to persons; read and follow all warnings and installation instructions before installing. All installation should be performed by a qualified electrician.

#### Risk of Electric Shock

Ensure power is off before installation or inspection. All wirings are performed in accordance with Electrical Code and local electrical code.

#### Risk of Fire

Fixtures are rated for use in 120-277V, 50-60Hz protected circuit and 90°C rated supply wire.

Para reducir el riesgo de descarga eléctrica, incendio o lesiones a personas, lea y siga todas las advertencias e instrucciones de instalación antes de realizarla. Toda instalación debe ser efectuada por un electricista cualificado.

#### Riesgo de descarga eléctrica

Asegúrese de desconectar la corriente antes de la instalación o inspección. Todos los cableados se realizan de acuerdo con el Código Eléctrico y el código eléctrico local.

#### Riesgo de incendio

Las luminarias están clasificadas para su uso con 120-277 V, circuitos protegidos de 50-60 Hz y cables adecuados para 90°C.

Lisez et suivez les instructions d'installation et les avertissements avant l'installation.

Toute l'installation doit être exécutée par un électricien qualifié, pour réduire les risques de choc électrique, de feu ou de blessures corporelles.

#### Risque de choc électrique

Assurez-vous que le courant soit coupé avant l'installation ou l'inspection et que tout le câblage soit effectué en conformité avec le code d'électricité et le code local d'électricité.

#### Risque de feu

Les luminaires sont conçus pour une utilisation de 120 à 277 V, pour un circuit protégé de 50 à 60 Hz et pour une source d'alimentation de 90°C.

#### FOR YOUR SAFETY

While performing installations described, gloves, safety glasses or goggles should be worn.

#### PARA SU SEGURIDAD

Mientras realice las instalaciones descritas, se recomienda el uso de guantes y gafas de seguridad.

#### POUR VOTRE SÉCURITÉ

Vous devriez porter des gants et des verres de protection lors des installations détaillées.

Install this kit only in the luminaire that have the construction features and dimensions shown in the photographs and/or drawings. Do not make or alter any open holes in an enclosure of wiring or electrical components during kit installation.

To prevent wiring damage or abrasion, do not expose wiring to edges of sheet metal or other sharp objects.

Do not alter, relocate, or remove wiring, lampholders, power supply, or any other electrical component.

**SUITABLE FOR DAMP LOCATIONS.**

Instale este kit solo en la luminaria que tiene las características de construcción y dimensiones que aparecen en las fotografías y/o dibujos. No realice ni altere los agujeros abiertos en un recinto de cableado ni en cualquier componente eléctrico durante la instalación del kit.

Para evitar daños en el cableado o abrasiones, no exponga el cableado a hojas de metal laminado u otros objetos cortopunzantes.

No altere, reubique o elimine cables, portalámparas, tomacorriente o cualquier otro componente eléctrico.

APTO PARA LUGARES HÚMEDOS.

Installez cet ensemble seulement dans un luminaire qui possède les caractéristiques de construction et les dimensions telles que démontrées sur les photographies et/ou dessins. Ne pas percer de trous ou modifier les trous existants dans un boîtier ou des composants électriques durant l'installation de l'ensemble.

Pour prévenir les dommages ou l'abrasion, ne pas mettre en contact le câblage avec des bords de plaques de metal ou tout autre objet coupant.

Ne pas modifier, délocaliser ou enlever du câblage, des supports de lampes, une source d'alimentation ou tout autre composant électrique.

CONVIENT AUX ENDROITS HUMIDES.

Plusrite USA  
2000 S. Grove Ave, Bldg B  
Ontario CA 91761

T:909-930-6868  
T:888-758-7443  
F:909-930-9988

[www.naturalled.com](http://www.naturalled.com)

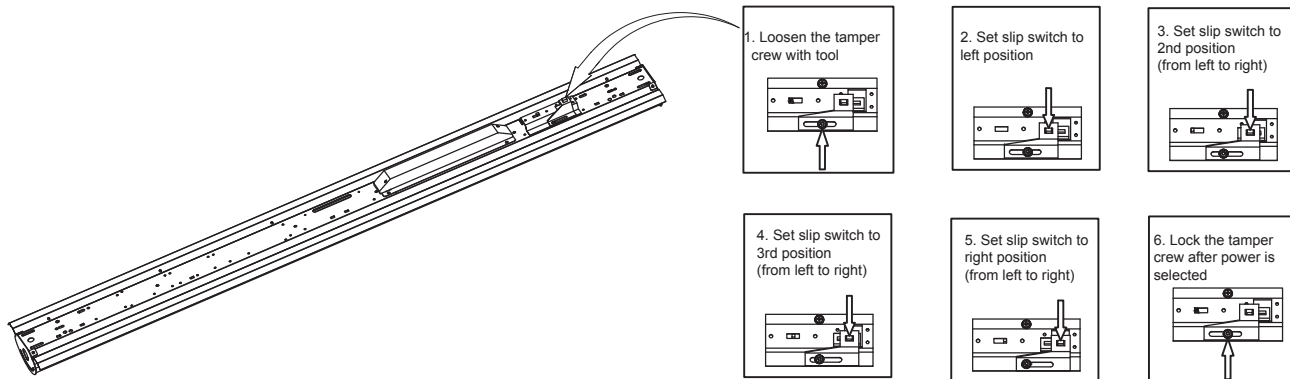
Made in China

# RSL Retrofit Strip Light

## ADJUST WATTAGE AND CCT BEFORE INSTALL

### WATTAGE SELECTION:

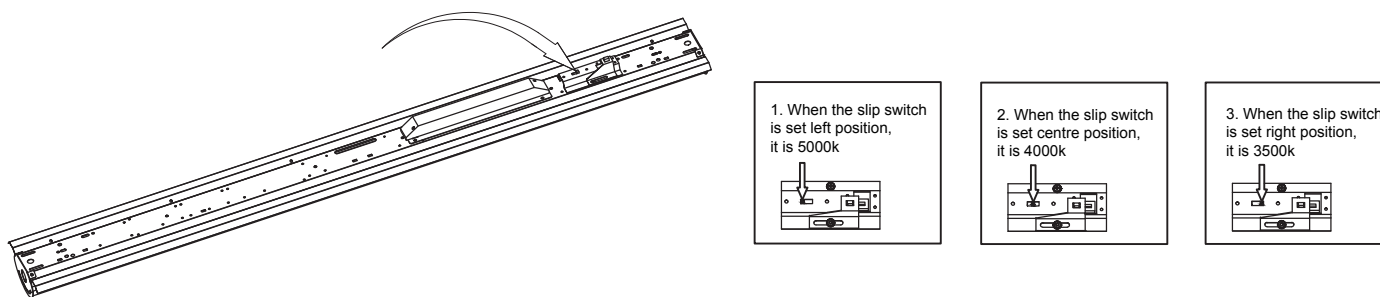
Schematic Wattage adjustment for Strip retrofit				
Item	Left Position	2nd Position(from left to right)	3rd Position(from left to right)	Right Position
4ft	44W	35W	27W	22W
8ft	54W	68W	88W	/



\*TAMPER RESISTANT SCREW REQUIRES TORX T20 BIT.(NOT INCLUDED)

### COLOR TEMPERATURE SELECTION:

Schematic CCT adjustment(3 set position)		
Left position	Middle position	Right position
5000K	4000K	3500K



### 0-10V DIMMABLE WIRING

Universal voltage driver permits operation at 120V thru 277V (347V for Canada market), 50 or 60 Hz. 0-10V control wires must be rated for 300V minimum. For 0-10V Dimming, follow the wiring directions as in fig. 1.

1. Connect the black fixture lead to the (+) LINE supply lead.
2. Connect the white fixture lead to the (-) COMMON supply lead.
3. Connect the GROUND wire from fixture to supply ground.  
Do NOT connect the GROUND of the dimming fixture to the output.
4. Connect the violet fixture lead to the (V+) DIM lead.
5. Connect the gray fixture lead to the (V-) DIM lead.

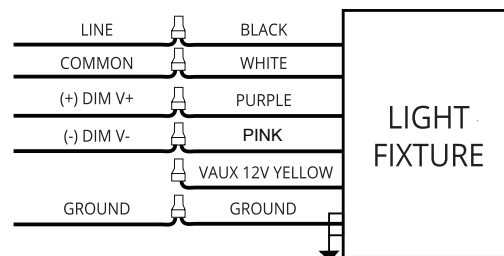


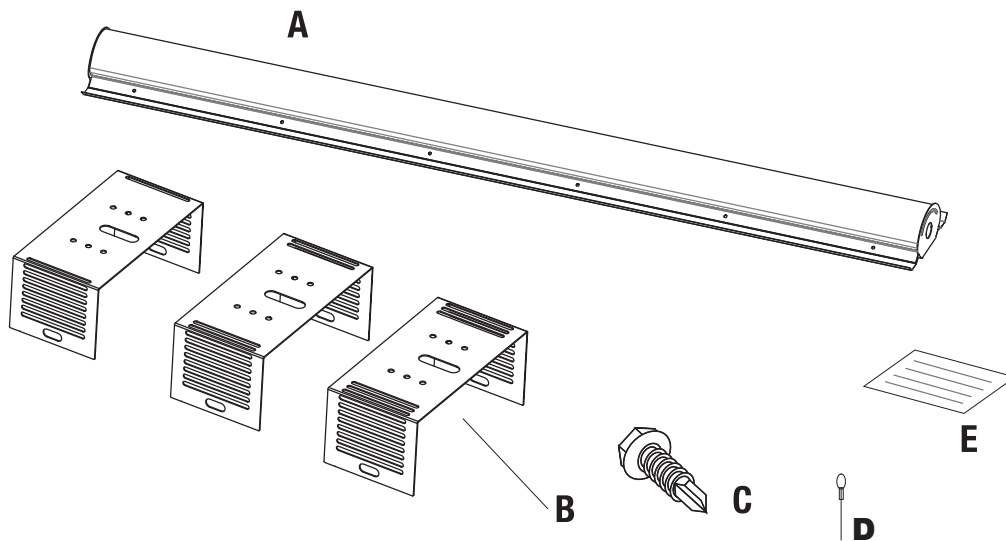
fig. 1

# RSL Retrofit Strip Light

## INSTALLATION/INSTALACIÓN

**Disconnect the power before installation. Exploded view of completed assembly with component call out. 1, 2, 3, etc.**

Desconecte la alimentación antes de la instalación. Vista de despiece del conjunto completo con indicación de componentes. 1, 2, 3, etc.  
Débranchez l'alimentation avant l'installation. Vue en éclaté de l'assemblage complet, avec le nom des composants. 1, 2, 3, etc.

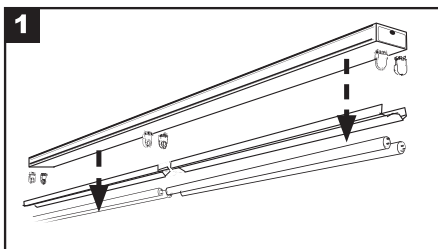


- A. LED Reflector Gear Tray
- B. Adjustable Mounting Bracket
- C. Self-drilling Screws
- D. Safety cables
- E. Luminaire Modification Label

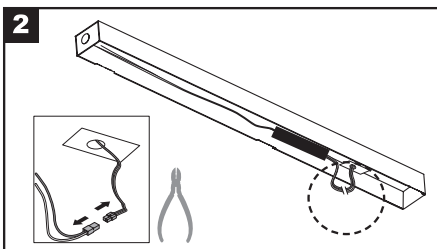
**TOOLS REQUIRED**

- a. Drill
- b. Pliers
- c. Wire Cutters
- d. General Purpose Gloves
- e. Screw Driver

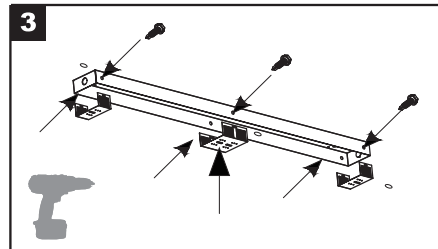
**Note:** "B. Form bracket at slots to fit fixture width"



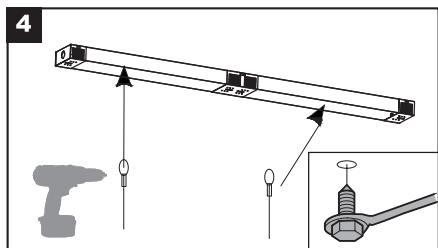
1 Remove lamps, ballast cover/reflector, socket bracket, and lamp holders from existing host strip luminaire.



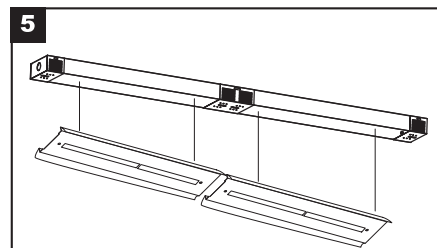
2 Disconnect AC mains from existing ballast. Depending on size and position of existing ballast, ballast may be removed or left intact.



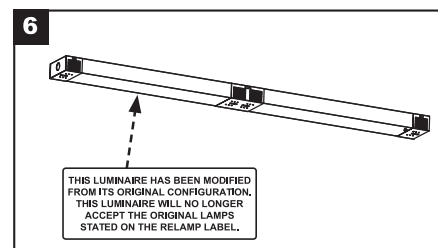
3 Use Self-tapping Tek Screws (C) to fasten Strip Bracket (B) to existing host strip fixture. For 8ft, make sure to align center piece of Strip Bracket with the center line of the host fixture.



4 Secure Safety cables (D) by fastening self-tapping tek screws (C) to existing strip housing. Make sure to feed tek screws through safety lanyard washers before fastening. Clip opposing end of safety cable to Gear Tray (A).



5 Clip opposing end of safety cable to Gear Tray (A). Use (2) Safety cables for each 4-ft. gear tray section in order to make electrical wire connection.



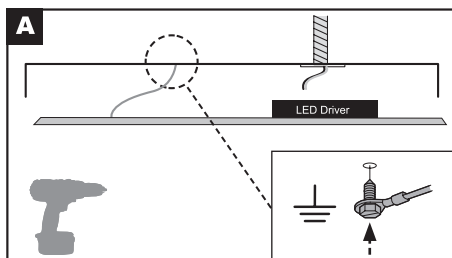
6 Place Label (E) on existing host strip housing.

THIS LUMINAIRE HAS BEEN MODIFIED FROM ITS ORIGINAL CONFIGURATION. THIS LUMINAIRE WILL NO LONGER ACCEPT THE ORIGINAL LAMPS STATED ON THE RELAMP LABEL.

# RSL Retrofit Strip Light

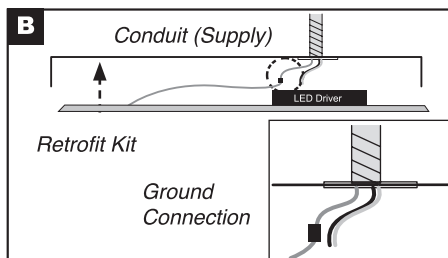
## INSTALLATION/INSTALACIÓN

### 7 Ground Connection



#### OPTION A:

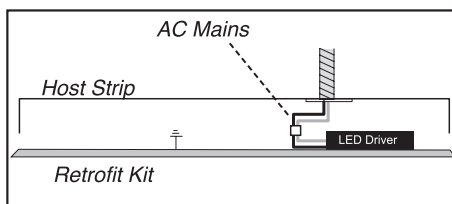
Securely fasten ground screw lead from Gear Tray (B) to host strip fixture if host strip is grounded.



#### OPTION B:

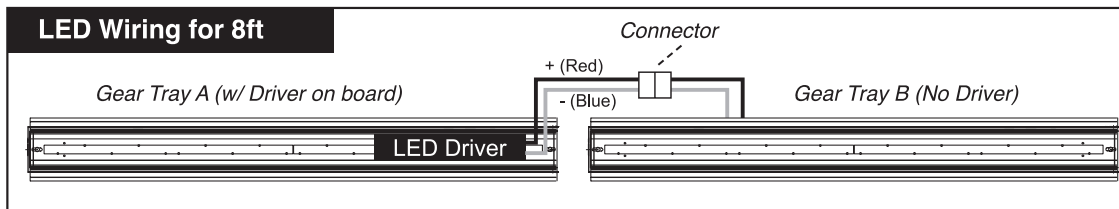
Connect ground from Gear Tray (B) to supply ground lead from conduit.

### 8 Electrical Connection

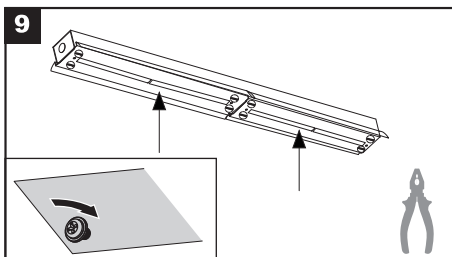


Follow instructions and wiring diagram on Page 2 to connect AC mains to Gear Tray input leads. Retrofit kit comes equipped with quick disconnect. Hide wires behind Gear Tray. Ensure leads do not hang out of Gear Tray to avoid electrical wiring being clamped between metal parts.

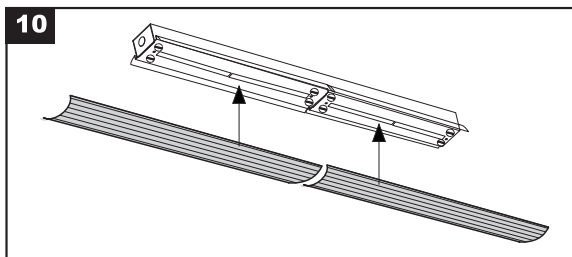
### LED Wiring for 8ft



For 8ft. kit, the kit will come with (2) LED Gear Trays (A and B). Gear tray A will have a driver. Connect output leads from Driver located on Gear Tray A to the leads on Gear Tray B by plugging in connector. Ensure leads are connected correctly: Red (+) and Blue (-) from Driver to LED modules.



Push Gear Tray towards Strip Brackets so that the Gear Tray sits flush with the brackets and strip housing. Make sure the slots of the gear tray and brackets are aligned. Fasten Gear Tray by Screws.



Remove protective packaging from LED modules and lens. Place Lens Diffuser onto retrofit kit by squeezing sides of Lens Diffuser and inserting edges into grooves of Gear Tray. Lens may need to be adjusted by squeezing sides or pressing the face of the lens.

